

# SIGMA

Y DISEÑO

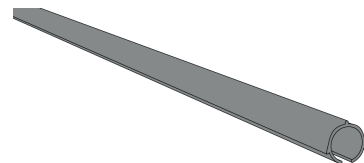
1

# Aluminio

- ▶ BARRA
- ▶ CANALETA
- ▶ CONTRAPESO
- ▶ EJE
- ▶ FASCIA
- ▶ TUBO
- ▶ RIEL

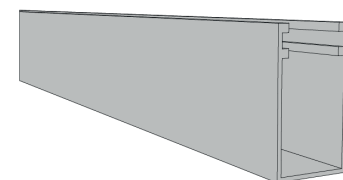
## Barra

CLAVE	DESCRIPCIÓN
AL-BAR-00113	BARRA P/ ROMANA . (1-BLANCO) 6.10



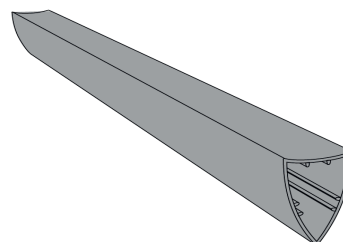
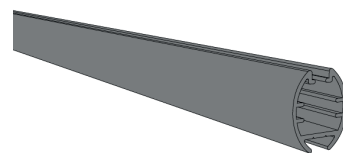
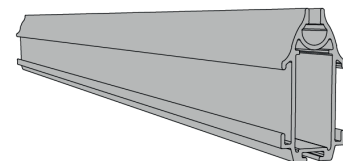
## Canaleta

CLAVE	DESCRIPCIÓN
AL-CAN-00622	CANALETA LATERAL . (1-BLANCO) 5.80

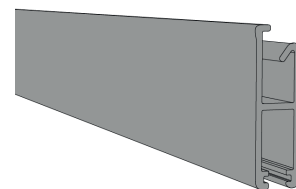
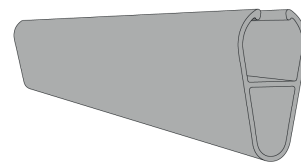


## Contrapeso

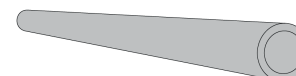
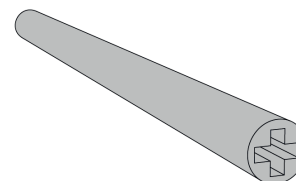
CLAVE	DESCRIPCIÓN
AL-CON-00048	CONTRAPESO BASE A . (1-BLANCO) 6.10
AL-CON-00049	CONTRAPESO BASE A . (11-CHOCOLATE) 6.10
AL-CON-02048	CONTRAPESO BASE A . (16-GRIS) 6.10
AL-CON-00050	CONTRAPESO BASE A . (3-MARFIL) 6.10
AL-CON-02047	CONTRAPESO BASE A . (33-NEGRO) 6.10
AL-CON-00053	CONTRAPESO BASE B . (1-BLANCO) 6.10
AL-CON-00768	CONTRAPESO BASE B . (11-CHOCOLATE) 6.10
AL-CON-02050	CONTRAPESO BASE B . (16-GRIS) 6.10
AL-CON-00054	CONTRAPESO BASE B . (3-MARFIL) 6.10
AL-CON-02049	CONTRAPESO BASE B . (33-NEGRO) 6.10
AL-CON-00055	CONTRAPESO BASE B . (53-S/ANODIZAR) 6.10
AL-CON-00612	CONTRAPESO BASE SHEER . (1-BLANCO) 6.10
AL-CON-00843	CONTRAPESO BASE SHEER . (11-CHOCOLATE) 6.10
AL-CON-02045	CONTRAPESO BASE SHEER . (16-GRIS) 6.10
AL-CON-00613	CONTRAPESO BASE SHEER . (3-MARFIL) 6.10
AL-CON-01770	CONTRAPESO BASE SHEER . (33-NEGRO) 6.10



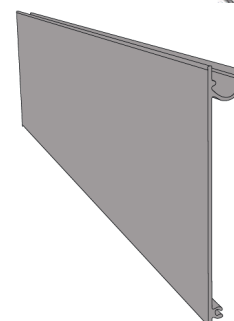
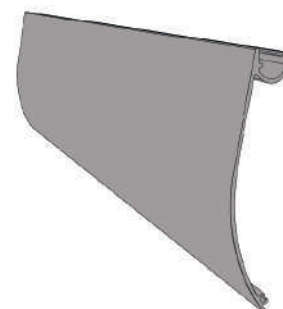
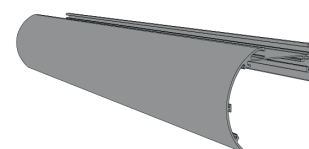
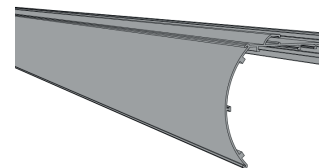
CLAVE	DESCRIPCIÓN
AL-CON-02065	CONTRAPESO BASE SHEER ULTIMATE (1-BLANCO) 6.10
AL-CON-02067	CONTRAPESO BASE SHEER ULTIMATE (11-CHOCOLATE) 6.10
AL-CON-02068	CONTRAPESO BASE SHEER ULTIMATE (16-GRIS) 6.10
AL-CON-02066	CONTRAPESO BASE SHEER ULTIMATE (3-MARFIL) 6.10
AL-CON-02069	CONTRAPESO BASE SHEER ULTIMATE (33-NEGRO) 6.10
AL-CON-02059 AL-CON-02061	CONTRAPESO BASE ULTIMATE (1-BLANCO) 6.10 CONTRAPESO BASE ULTIMATE (11-CHOCOLATE) 6.10
AL-CON-02062 AL-CON-02060 AL-CON-02063	CONTRAPESO BASE ULTIMATE (16-GRIS) 6.10 CONTRAPESO BASE ULTIMATE . (3-MARFIL) 6.10 CONTRAPESO BASE ULTIMATE . (33-NEGRO) 6.10




CLAVE	DESCRIPCIÓN
AL-EJE-00633 AL-EJE-00635 AL-EJE-02046 AL-EJE-00636 AL-EJE-01769	EJE SHEER . (1-BLANCO) 6.10 EJE SHEER . (11-CHOCOLATE) 6.10 EJE SHEER . (16-GRIS) 6.10 EJE SHEER . (3-MARFIL) 6.10 EJE SHEER . (33-NEGRO) 6.10
AL-EJE-02096	EJE ULTIMATE . (53-S/ANODIZAR) 6.10

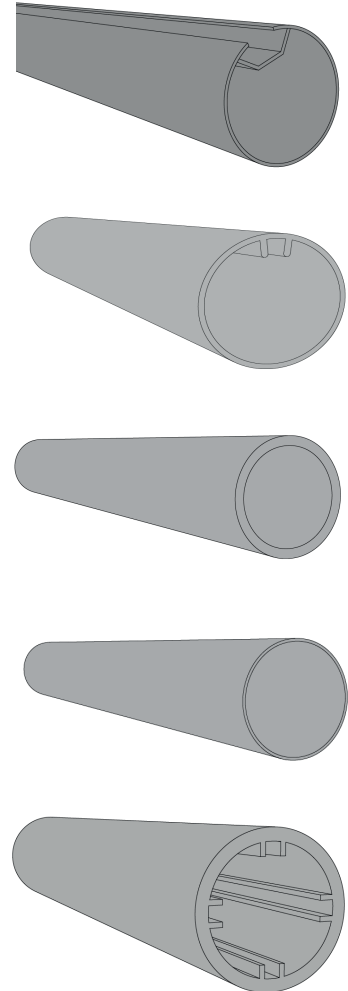


CLAVE	DESCRIPCIÓN
AL-FAS-01654 AL-FAS-01656 AL-FAS-02044 AL-FAS-01655 AL-FAS-01744	FASCIA PREMIUM . (1-BLANCO) 6.10 FASCIA PREMIUM . (11-CHOCOLATE) 6.10 FASCIA PREMIUM . (16-GRIS) 6.10 FASCIA PREMIUM . (3-MARFIL) 6.10 FASCIA PREMIUM . (33-NEGRO) 6.10
AL-FAS-00638 AL-FAS-00640 AL-FAS-02043 AL-FAS-00637 AL-FAS-01768	FASCIA SHEER . (1-BLANCO) 6.10 FASCIA SHEER . (11-CHOCOLATE) 6.10 FASCIA SHEER . (16-GRIS) 6.10 FASCIA SHEER . (3-MARFIL) 6.10 FASCIA SHEER . (33-NEGRO) 6.10
AL-FAS-02083 AL-FAS-02085 AL-FAS-02086 AL-FAS-02084 AL-FAS-02087	FASCIA ULTIMATE CURVA . (1-BLANCO) 6.10 FASCIA ULTIMATE CURVA . (11-CHOCOLATE) 6.10 FASCIA ULTIMATE CURVA . (16-GRIS) 6.10 FASCIA ULTIMATE CURVA . (3-MARFIL) 6.10 FASCIA ULTIMATE CURVA . (33-NEGRO) 6.10
AL-FAS-02077 AL-FAS-02079 AL-FAS-02080 AL-FAS-02078 AL-FAS-02081	FASCIA ULTIMATE RECTA . (1-BLANCO) 6.10 FASCIA ULTIMATE RECTA . (11-CHOCOLATE) 6.10 FASCIA ULTIMATE RECTA . (16-GRIS) 6.10 FASCIA ULTIMATE RECTA . (3-MARFIL) 6.10 FASCIA ULTIMATE RECTA . (33-NEGRO) 6.10



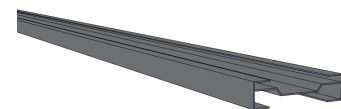
# Tubo

CLAVE	DESCRIPCIÓN
AL-TUB-01631	TUBO 1 1/2 PULG. RANURA PLANA (53-S/ANODIZAR) 6.00
AL-TUB-00101	TUBO 1 1/2 PULG. RANURA PLANA (53-S/ANODIZAR) 6.10
AL-TUB-00103	TUBO 1 1/4 PULG. REFORZADO S/ RANURA (53-S/ANODIZAR)
AL-TUB-00105	TUBO 40 MM . (53-S/ANODIZAR) 6.10
AL-TUB-00106	TUBO 50 MM . (53-S/ANODIZAR) 6.10
AL-TUB-00107	TUBO 60 MM . (53-S/ANODIZAR) 6.10



# Riel

CLAVE	DESCRIPCIÓN
AL-RIE-00855	RIEL 3/8 PULG. . (1-BLANCO) 6.10



CLAVE	DESCRIPCIÓN
AL-RIE-02071 AL-RIE-02073 AL-RIE-02074 AL-RIE-02072 AL-RIE-02075	RIEL ULTIMATE P/ SHEER (1-BLANCO) 6.10 RIEL ULTIMATE P/ SHEER (11-CHOCOLATE) 6.10 RIEL ULTIMATE P/ SHEER (16-GRIS) 6.10 RIEL ULTIMATE P/ SHEER (3-MARFIL) 6.10 RIEL ULTIMATE P/ SHEER (33-NEGRO) 6.10
AL-RIE-01765	RIEL VELCRADO P/ PANEL (1-BLANCO) 5.80
AL-RIE-00563	RIEL 4 VIAS P/ PANEL (1-BLANCO) 5.00
AL-RIE-00564	RIEL 5 VIAS P/ PANEL (1-BLANCO) 5.00
AL-RIE-01932	RIEL INFERIOR EXTERNO PLANO SHANGRI-LA (1-BLANCO) 5.80
AL-RIE-02034	RIEL INFERIOR INTERNO CURVO SHANGRI-LA (1-BLANCO) 5.80
AL-RIE-00026	RIEL R11 C/ VARILLA (53-S/ANODIZAR) 6.10

